

OTS20 (OTS Advance)

PRODUCT DATASHEET

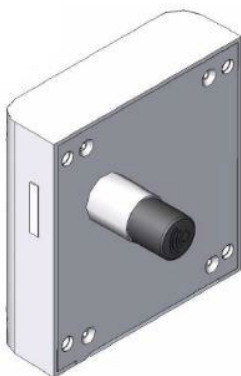
1. MAIN FEATURES

Description

OTS20 system is an RFID electronic locking system principally used on fitness and wellness facilities, offices and universities.

This technology consists in interaction between a transmitter (key) and a receiver (lock). This system replaces the traditional mechanical key and cylinder.

Our locks meet all anchorage and measurement standards and, therefore, can replace old lock systems without having to modify cabinets or lockers.



Configuration

- Fully configurable by end customer.
- Access permission assignment via software.
- 3rd party SW integration via SDK.
- Automatic openings.

Compatibility

- Metal Doors.
- End customer wearables.

Maintenance

- Configuration is saved after battery changes.
- Low battery indicator.
- FW update via NFC.
- Emergency power supply through the knob.

Security

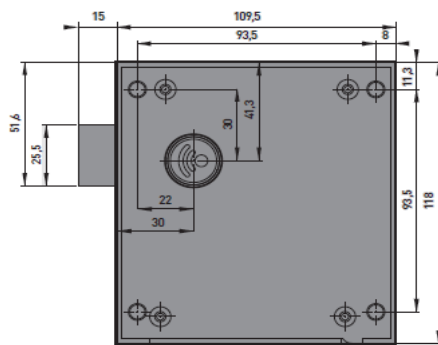
- Encrypted communications.
- Vandalism-proof: Electronic components, batteries and mechanical locking system are covered inside the lock.

2. TECHNICAL SPECIFICATIONS

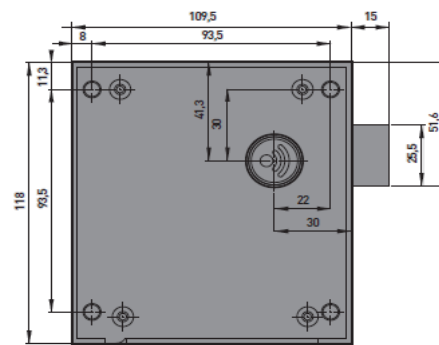
AUTHENTICATION MODES	Authentication mode	RFID
	Supported technologies	MIFARE® (DESFire EV1 & EV2, Ultralight, Ultralight C, Classic1K/4K 4B and 7B UID – ISO/IEC 14443)
	Reading	UID / Sector / Application / File / Page
	Wearables	RFID cards, wristbands, FOBs, Technogym key, Stickers & Transponders
	Reading range	Up to 2 cm (pressing the knob)
USAGE MODES	Free mode	Up to 3 locks simultaneously with just one wearable
	Dedicated mode with auto cancellation	Up to 6 locks simultaneously with just one wearable (Only one wearable per dedicated lock)
	Dedicated mode without auto cancellation	Up to 6 locks simultaneously with just one wearable (multiple wearables per dedicated lock)
	Multifunction mode	Up to 3 free and 3 dedicated locks simultaneously with just one wearable
	Renting mode	Configurable in periods of 15 minutes
USER INTERFACES	Notifications	LED (Red, amber & green)
	Lock closed notifications	<ul style="list-style-type: none"> Knob in closed position Red LED blinking every 2 seconds (configurable)
	Alarms	<ul style="list-style-type: none"> Low battery indicator (3 amber LED blinking) Change battery indicator (1 long amber LED blinking)
COMMUNICATION INTERFACES	Communication standard	NFC
	Encryption mode	AES 256
	Reading field range	Up to 2 cm (pressing the knob)
	Number of maximum connections	1
POWER SUPPLY	Batteries (Type & quantity)	4 alkaline batteries VARTA Type AA
	Battery life	Up to 10 years at room temperature (Depending on usage and configuration)
MECHANICAL CHARACTERISTICS	Dimensions	119,5 mm x 35 mm x 118 mm
	Weight	375 gr
	Knob resistance	1000 N
	Housing	Grey (RAL 7035)

ENVIROMENTAL CONDITIONS	Temperature	From -10°C to 42°C (interiors)
	Humidity	< 97% (Condensation free)
	Protection type	IK09 / IP55

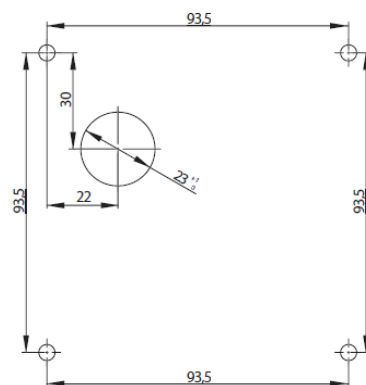
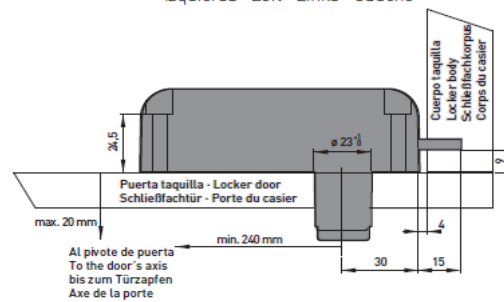
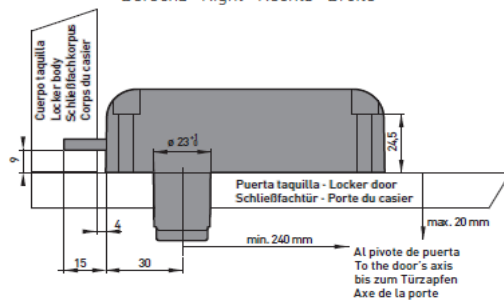
3. ASSEMBLY



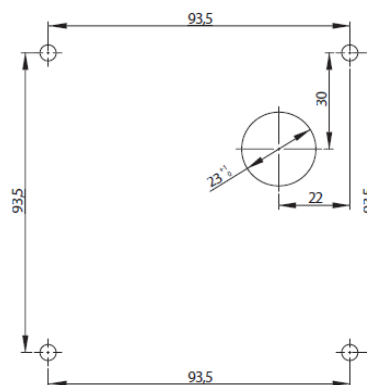
Derecha · Right · Rechts · Droite



Izquierda · Left · Links · Gauche



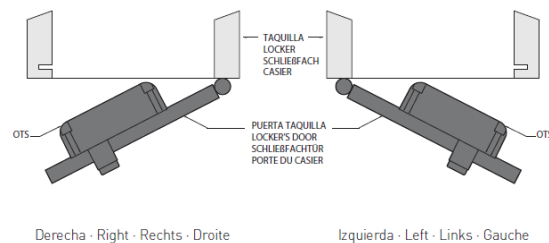
Derecha · Right · Rechts · Droite



Izquierda · Left · Links · Gauche

4. OTHER DATA

Door Material	• Phenolic
	• Glass
	• Metal (Booster needed)
	• HPL
	• Melamine
Door Thickness	<20mm
Availability	Right. / Left. Handed



5. OPTIONAL ACCESSORIES

- NFC Programmer.
- PC Software.
- Desktop reader.
- Infoterminal.
- SDK for integrators.